

Alan Wilson

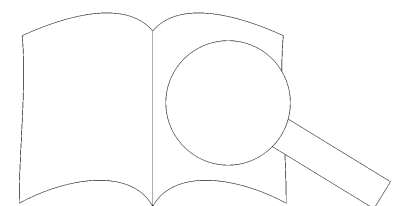
Haec dies
Christus in Ewigkeit

Descant, choir SATB
organ or piano or keyboard
in 7 languages
for international e

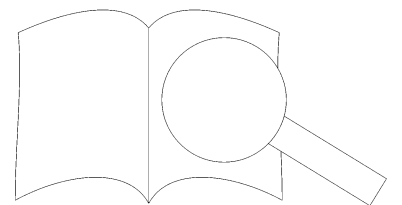
Überstimme
Organo r
In 7 S
für

• SATB
• piano ou orgue électronique
• en 7 langues
• pour les rencontres internationales
• chœurs

Carus 7.399



PROBE-PARTITUR
Ausgabequalität gegenüber Original evtl. gemindert • Evaluation Copy - Quality may be reduced • Carus-Verlag 



Haec dies / Christus in Ewigkeit

Alan Wilson (*1947)

Text: Hebr 13,8

Introitus / Introduction

Organo



Refrain

Überstimme
last time only

ff

Haec Di - es, quam fe - cit Do - - - -

Soprano
Alto

f *

Haec Di - es, quam fe - cit Do - mi - nus,

Tenore
Basso

Organo



nus, Do - - - -

et lae

e - - a. a. a.

1. 2. 3.

Go to B (p.5) 2. 3.

Go to Canon, Refrain and Coda 3.

nus.



* Unison voices first and last time

Aufführungsdauer / Duration: ca. 5 min.

© 2006 by Carus-Verlag, Stuttgart – CV 7.399

Vervielfältigungen jeglicher Art sind gesetzlich verboten. / Any unauthorized reproduction is prohibited by law.

Alle Rechte vorbehalten / All rights reserved / Printed in Germany / www.carus-verlag.com

A

German
 1. Chris-tus ges-tern, Chris-tus heu-te, Chris-tus in E - - wig-keit. Chris-tus ges-tern,

Flemish/
 Dutch
 3. Chris-tus giste-ren, van - daag, Chris-tus in eeu - wig-heid. Chris-tus giste-ren,

Spanish
 5. Je - su Cris-to, es el mis-mo, a - yer, hoy y pa-ra siem-pre.

Organo

Chris-tus heu-te, Chris-tus in E - - wig-keit. Chris-tus ges-tern,

Go back to Refrain

van - daag, Chris-tus in eeu - wig - heid.

- yer, hoy y pa-ra siem-pre, pa-ra siem-pre.

Refrain

B

English
2. Christ, the same yes-ter-day, to - day and for - ev - er, yes-ter-day,

French
4. Le Christ hi - er et au-jourd'hui, est le même pour l'é - ter - ni-té, il est le même,

Italian
6. Cris - to è lo stes-so, ie-ri, og-gi e per sem-pre,

Organo

to - day, the same for - ev -

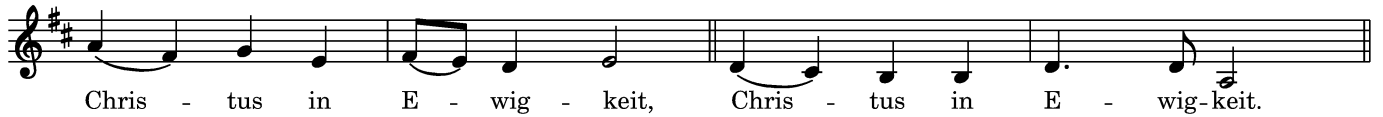
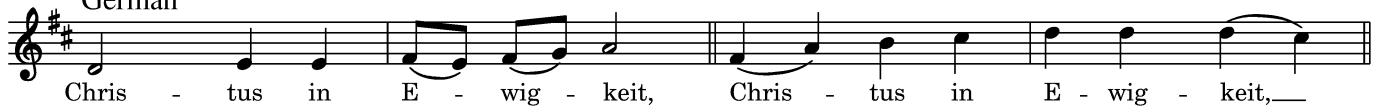
Go back to Refrain

il est le même, il ni - té.

è lo stes-so per l'e - ter - ni - ta.

Canon

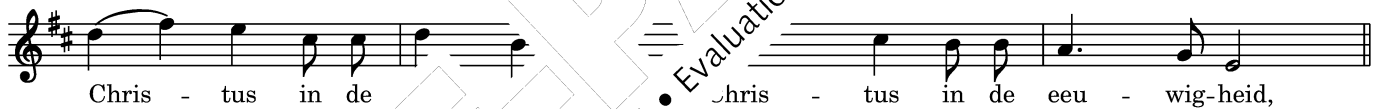
German



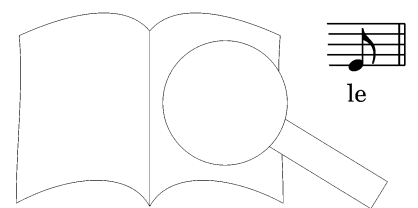
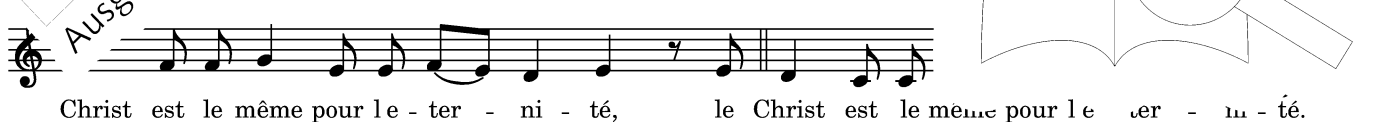
English



Flemish/Dutch



Frenc



Spanish

Cris - to es el mis-mo pa - ra siem - pre, Cris - to es el mis-mo pa - ra siem - pre,

Cris - to es el mis-mo pa - ra siem - pre, Cris - to es el mis-mo pa - ra siem - pre,

Cris - to es el mis-mo pa - ra siem - pre, Cris - to es el mis-mo pa - ra sie

Italian

Cris-to è lo stes-so per le - ter - ni - ta, Cris-to è lo ster

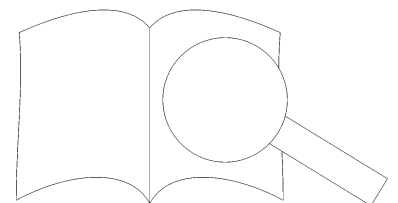
Cris-to è lo stes-so per le - ter - ni - ta, Cr

Cris-to è lo stes-so per le - ter - lo stes-so per le - ter - ni - ta.

Organ accompaniment

Canon suddenly stops and Organ follows immediately

Go back to Refrain



Coda

ff
A - - - men, a - - - men, a -
ff
A - - - - - men, a - - - - - men, a - -
ff
A - - - - - men, a - - - - - men, a -
ff
A - - - - - men, a - - - - -
ff
A - - - - - men, a - - - - -

- - - men, a
- - - me- - - - men, a - - - men.
- - - - - men, a - - - men.
a, a - - - - - men, a - - - men.
rall. *fff*
fff
fff
fff